



This Quick Start Guide is not intended to replace the full user instructions. Please read the full user instructions before using the Airflo 12.



Before Use

WARNING: THE AIRFLO MUST BE PUT ON CHARGE FOR 16 HOURS BEFORE FIRST USE, THEN FULLY DISCHARGED. FAILURE TO DO SO WILL NOT GIVE OPTIMISED LIFTING CAPACITY.

1 Connect the battery charger to a mains power socket and the Airflo 12 charging socket.

2 CHARGE THE BATTERY FOR **16 HOURS** BEFORE USE (e.g. 5.00pm to 9.00am). The battery status indicator lights will show the charge state as indicated.

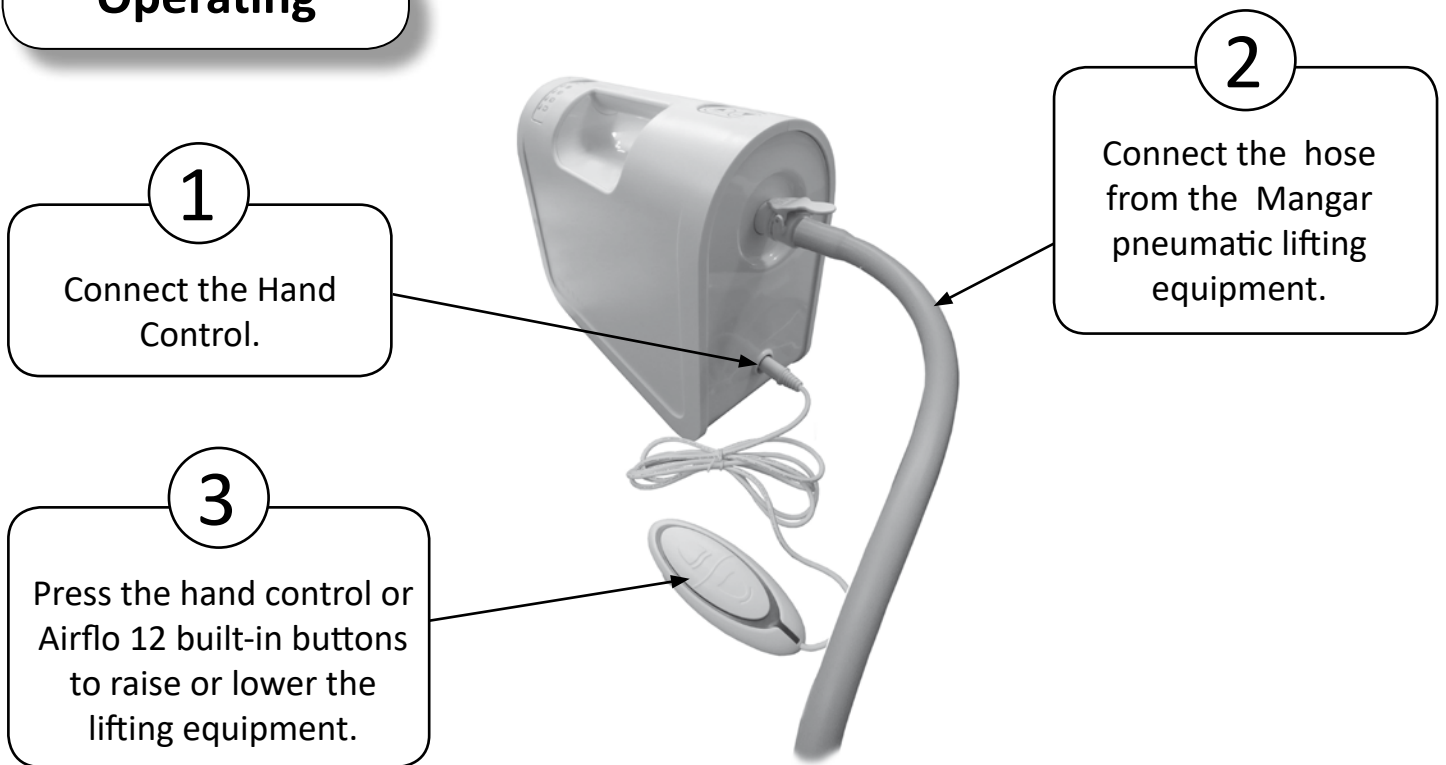
Once a red LED and Deflate Lock has been activated during discharge (see page 2), a 2 hour plus charge is required to reset the Deflate Lock.

3 The battery needs to undergo a FULL CHARGE - DISCHARGE - FULL CHARGE before normal use in order to optimise the battery performance.

Once the battery has been FULLY CHARGED for the first time, attach the Airflo 12 to the inflatable product (see page 2) and then use the product until the battery status indicator light turns RED.

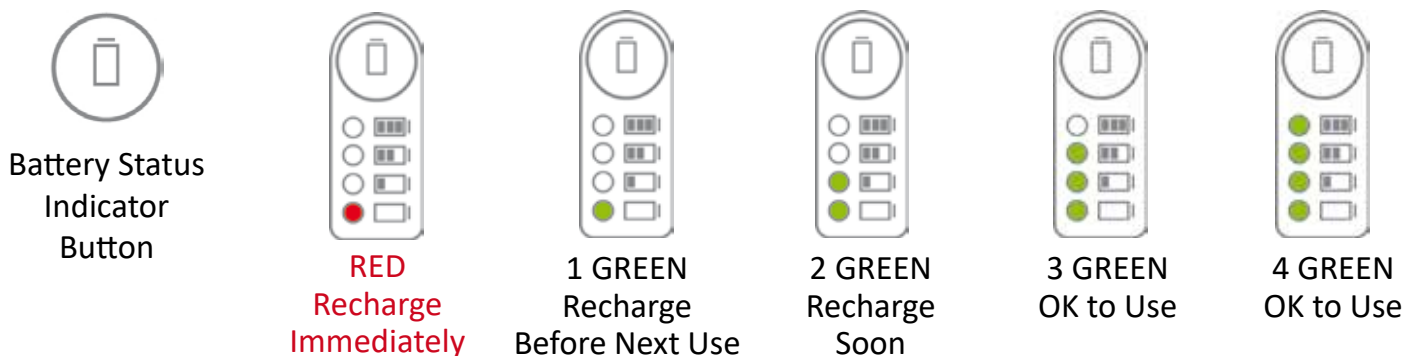
4 As soon as the battery status indicator has turned RED, immediately put the Airflo 12 back on charge for a further 16 hours. The battery has now undergone a full charge, discharge and recharge and can now be left on charge when not in use.

Operating



IMPORTANT: The Airflo 12 is designed not to deflate if it's internal processor can see that there would be insufficient battery voltage to fully inflate the lifting product. This safety feature stops an inflatable bathing product from being lowered to the bottom of a bath if there is insufficient battery voltage to raise it again. The safety feature means that once you have inflated the product using the 'Up' button, you must wait 30 seconds before pressing the 'Down' button. If the 'Down' button is pressed too soon, you may see the battery status indicator track down quicker to a RED light and Deflate Lock. Unlock by putting the Airflo 12 back on charge for 2 hours.

TO DETERMINE THE BATTERY CHARGE STATE, YOU MUST DISCONNECT THE CHARGING LEAD AND THEN PRESS THE 'BATTERY STATUS INDICATOR' BUTTON TO ACTIVATE THE BATTERY STATUS INDICATOR LIGHTS:



WARNING: The battery must be put on charge immediately as soon as the red indicator light appears. Running the Airflo 12 on RED until the battery is exhausted will damage the battery.

Mangar Health

Presteigne, Powys, Wales, LD8 2UF, UK

Tel: +44(0)1544 267674

Email: sales@mangarhealth.com

Web: www.mangarhealth.com